



Medicine on the Frontier of Rain Forest Conservation: Healthcare to Heal the Planet

Hotlin Ompusunggu, DDS



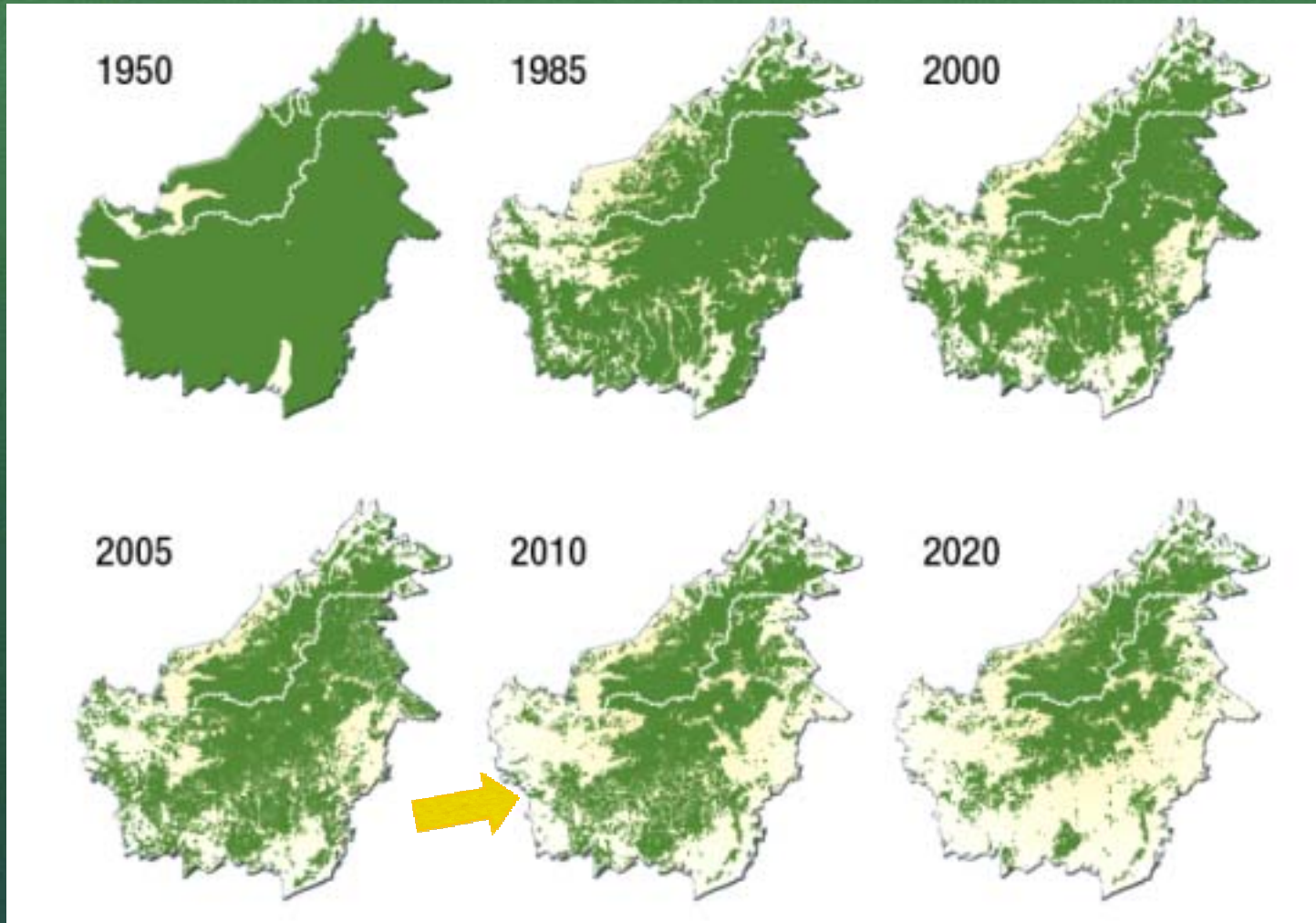
Intertwined Human and Environmental Health

Bornean Rainforests

- Most biodiverse forests
- National Geographic calls Borneo the most critical conservation issue on the planet
- Gunung Palung is the jewel in the crown
- 10% of world's remaining orangutans
- Watershed for 60,000 people
- Reforestation very hard!



Borneo



Four Examples

- Deforestation → Increased Malaria
- Deforestation → Water Scarcity → Food Insecurity
- Pesticide and Herbicide Exposure
- Needing cash (for health care, cigarettes or food) leads to deforestation of wildlife habitat



Health In Harmony: Uniquely Positioned

- Providing High Quality Health Care – 25,000 patient visits
- Community-designed Incentive system
- Non-cash payment
- Alternative green income generation (organic farming, reforestation)
- Social capital (government & community)



Building a Hospital

- 1 surgery = 90 trees
- C-sections essential to reduce maternal and child mortality
- Increase social capital
- Replication training center



Intertwined Solutions

- 4 WD Ambulance Service
- Mobile Clinic Visits
- Reforestation
- Mosquito net distribution
- Organic Farm Training
- Goats for Widows



Forest Restoration

- 38 000 seedlings
- 25 acres
- Partner with community
- Social economy project
- Education for students and community



Next Steps

- Expand Health Services
- More Alternative Incomes
- Forest Guardians
- Continued government and community involvement
- Carbon Financing
- Microfinance?





Saving Lives Saving Rain Forest
www.healthinharmony.org

Acknowledgments

- The government of Kayung Utara Regency in West Kalimantan.
- The Gunung Palung National Park Office
- Photo Credits:
 - Erick Danzer
 - Tim Laman
 - Ted Ullrich
 - Ian McFadden
 - Kinari Webb
 - Lauren Tobias
 - Cam Webb

