

Project Punde Kundo: Community-based monitoring of red panda in Nepal



Brian Williams
CEO
Red Panda Network

www.redpandanetwork.org



Project Punde Kundo

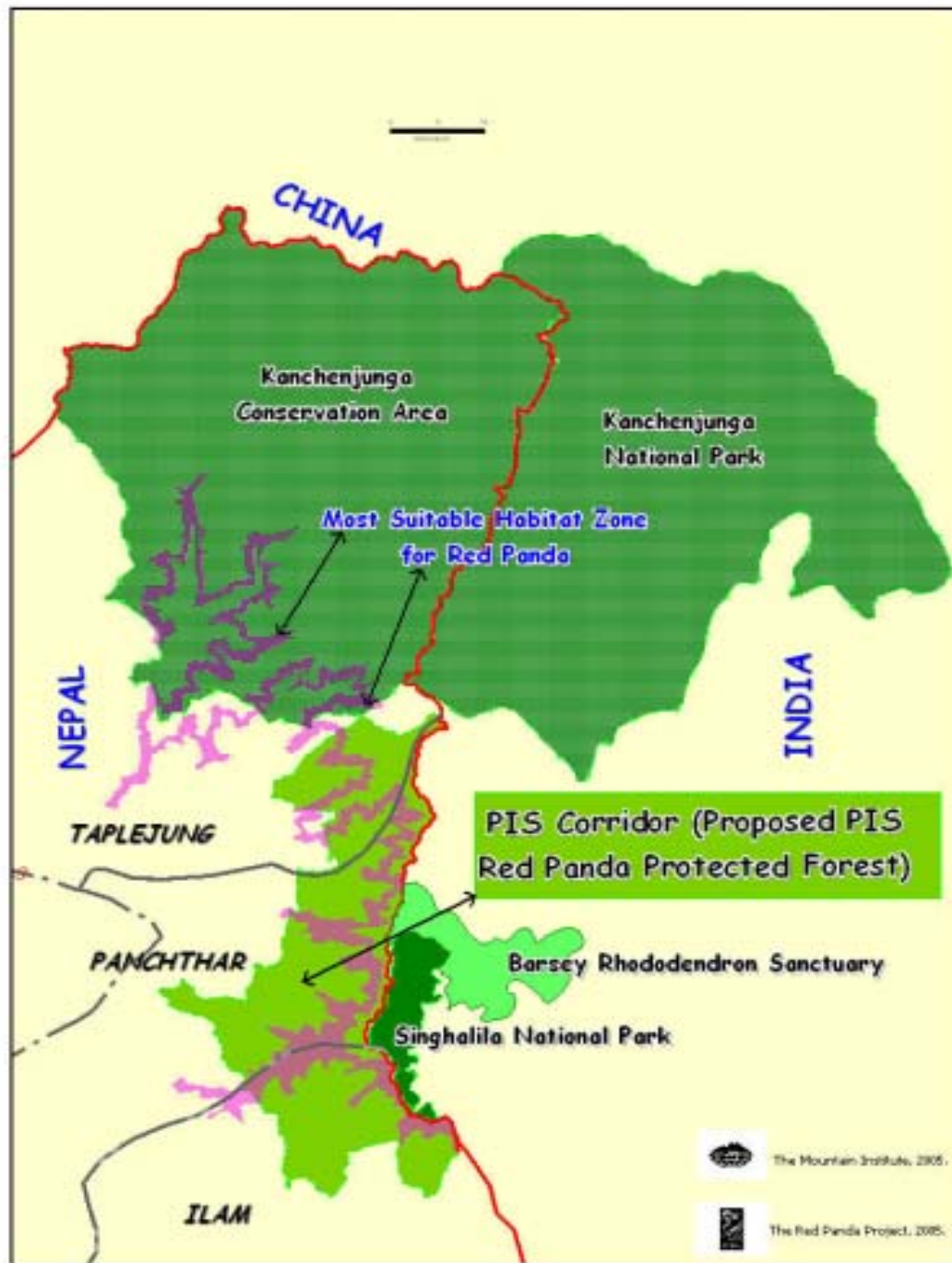
- Project Area
- Community Forestry in Nepal
- Local Ecological Knowledge
- Monitoring Methodology
- Outcomes



Project Area

RED PANDA NETWORK

- Panchtar-Ilam-Taplejung Corridor of Eastern Nepal
- Eastern Himalayan Broadleaf and Conifer Ecoregion (WWF Global 200)
- Himalayan Hotspot (Conservation International)
- Transboundary region
 - West Bengal and Sikkim - India
 - Panchtar-Ilam-Taplejung districts - Nepal



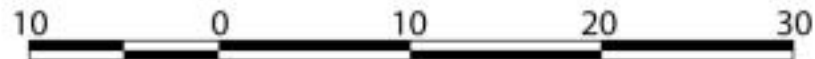


Legend

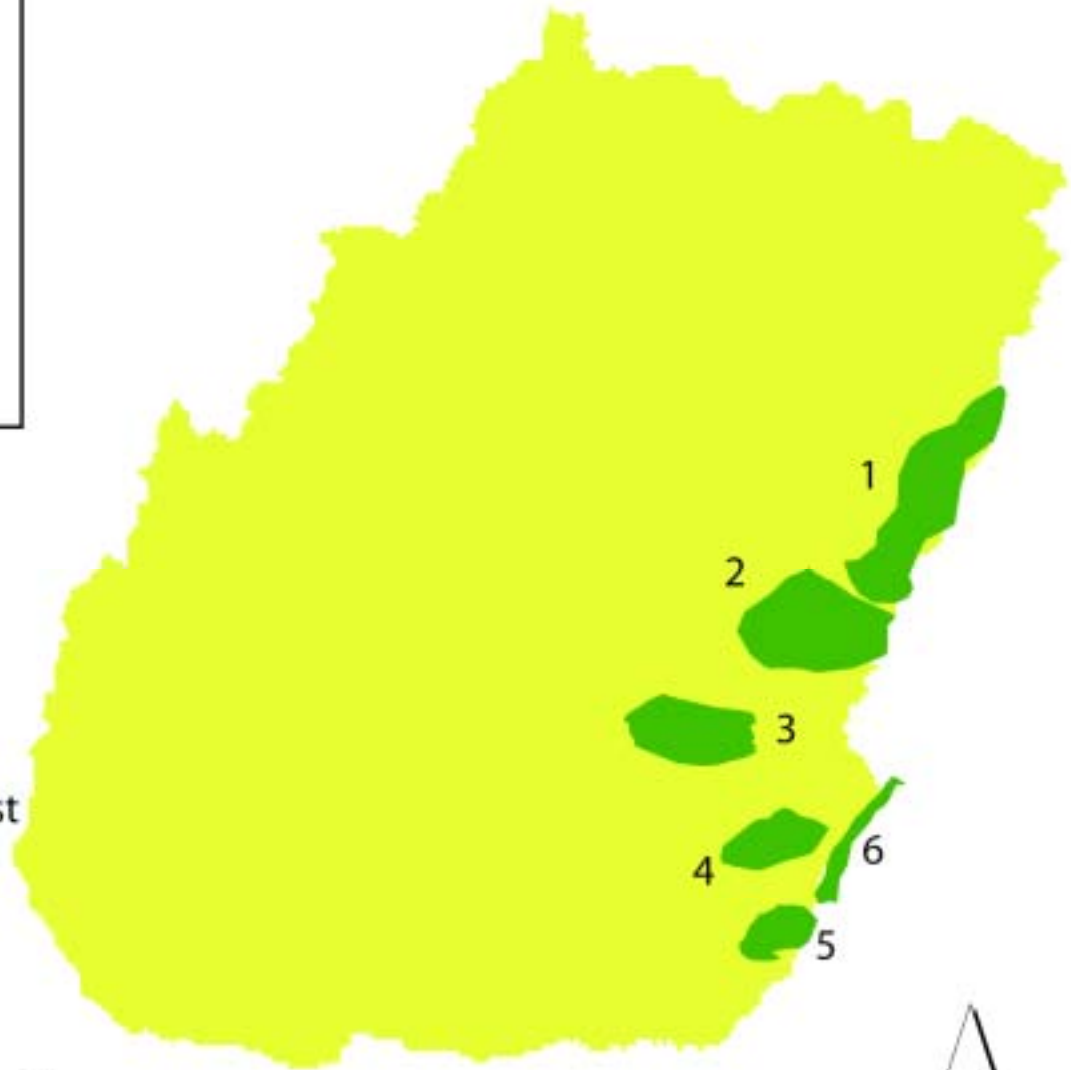
 District Area

 Sample Forests

1. Deurali Community Forest
2. Timbung Pokhari Community Forest
3. Kanchenjunga Community Forest
4. Kalpokhari Community Forest
5. Chawakhola Community Forest
6. Gauthale Community Forest



Kilometers







Threats

1. Grazing and Road Building



2. Firewood cutting



3. Bamboo cutting









RED PANDA NETWORK

Community Forestry in Nepal

- 17,000 formed in Nepal
- 200+ in Project Area
- Forests handed over to communities for management
- Community Forest User Group (CFUG)
- Democratically elected CFUG committee



RED PANDA NETWORK

Local Ecological Knowledge

- Intimate knowledge of local flora and fauna
- Local herders usually have the most knowledge
- Knowledge of most useful species
- Marginalized families have most knowledge



RED PANDA NETWORK

Monitoring Methodology

1. Meet with Community Forest User Groups
2. Choose two monitors from each group
3. Conduct training of Monitors
4. Monitor Forests on a monthly basis - w/ trained ecologist
5. Follow up awareness workshops







"सुदूरग रेडपाण्डा (डावरे) को संरक्षण जरो!"
RED PANDA CONSERVATION & MONITORING TRAINING
रेडपाण्डा संरक्षण तथा अनुगमन तालिम
२०६७ असार १२
फुङ्लिङ-धुताप्लेजुङ
OPCF Hong Kong
THE MOUNTAIN INSTITUTE
RED PANDA NETWORK





Outcomes

RED PANDA NETWORK

- 38 CFUG members trained and employed
 - 38 households = yearly income doubled - 266 individuals supported
- Greater Awareness and Protection of Red Panda
 - 4 illegally captured red panda returned to wild
 - Creation of a red panda protected area in 1 community forest
- Community-initiated reforestation of red panda habitat







A red panda is perched on a thick, moss-covered tree branch in a lush, green forest. The panda's fur is a mix of reddish-brown and white, particularly around its face and ears. The background is filled with vibrant green leaves and branches, creating a dense, natural setting. The lighting is soft, highlighting the texture of the panda's fur and the moss on the branch.

Thank You